

BLAST HD

Industrial Strength Cleaner & Heavy Duty Problem Solver Gel



BLAST HD is a fast acting industrial strength gel type problem solver formulated to help remove smoke, soot, hydrocarbons, rust, bore water stains, mineral deposits and red soil marks. Ideal to clean and remove grout haze and efflorescence. It is also effective in removing the most extreme type of built up grime and dirt where other cleaning products have not been as effective. Can also be used to etch concrete.

SURFACE USE: Use only on acid resistant hard surfaces e.g. Porcelain, Ceramic, Tessellated and Quarry Tiles, Bricks, Pavers, Terracotta, Engineered Stone, Acid Resistant Natural Stone and Terazzo etc. Do NOT use on acid sensitive natural stone e.g. marble, limestone, travertine etc or acid sensitive surfaces.

WHERE TO USE: For indoor, outdoor, domestic and commercial areas e.g. homes, hotels, motels, resorts, schools, aged care, holiday parks, shopping and retail outlets, restaurants, bars etc.

TEST FIRST: Always test first in an inconspicuous area to determine ease of application, dilution rate, dwell time, colour stability and desired results. End user must determine suitability of product for their own use.

PRECAUTIONS & SAFETY DIRECTIONS:

1. Read entire label, SDS and technical bulletin before using;
2. Wear appropriate gloves, skin and eye protection;
3. Do NOT breathe fumes, mist, vapours or spray or kneel in product.
4. Remove all jewellery before use;
5. Use when surface temperature is between 4°C & 32°C;
6. Do NOT allow contact with acid sensitive surfaces;
7. Do NOT mix in metal containers or with other chemicals;
8. May affect dark grouts, grout colourants and polished surfaces;

HOW TO DILUTE & USE:

Always add Blast HD to clean water to prevent splashing.

1. Sweep, vacuum, or wipe surface;
2. Dilute depending on cleaning requirements;
 - **LIGHT CLEANING**
RATIO 1:20 - 1 part Blast HD to 20 parts water.
(200ml Blast HD™ to 4000ml water = 4.2 litres cleaner)
 - **MODERATE CLEANING**
RATIO 1:10 - 1 part Blast HD to 10 parts water.
(400ml Blast HD to 4000ml water = 4.4 litres cleaner)
 - **HEAVY DUTY CLEANING**
RATIO 1:5 - 1 part Blast HD to 5 parts water.
(500ml Blast HD to 2400ml water = 4 litres cleaner)
 - **EXTREME CLEANING**
RATIO 1:2 - 1 part Blast HD to 2 parts water.
(1L Blast HD to 2L water = 3 litres cleaner)
3. Carefully apply diluted solution to surface;
4. Allow minimum dwell time of 10 minutes;
5. DO NOT ALLOW PRODUCT TO DRY ON SURFACE - ADD MORE TO KEEP IT WET AND ACTIVE;
6. Scrub with a white nylon pad, scrub brush or scrub machine;
7. Remove the dirty solution with a wet vac or mop;
8. Rinse thoroughly with clean water;
9. Repeat the process as necessary.

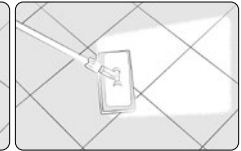
HOW TO USE QUICK GUIDE:



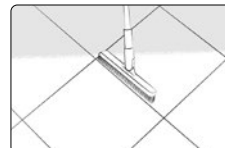
Dilute depending on cleaning requirements



Apply diluted solution to the surface



After the appropriate dwell time, scrub surface



For dirty grout joints, scrub with a grout brush



Remove dirty solution with a wet vac then rinse



Rinse thoroughly with clean water

LIMITATIONS:

- Heavily soiled surfaces may require longer dwell time and or stronger solution or may require resurfacing or replacing;
- Badly stained grout may require re-grouting or re-colouring with Colour'N'Seal;
- Does not remove deep set oil or food stains
- Refer to www.sealersplus.com.au for other appropriate stain removal or problem solving product.

HANDLING, STORAGE & CLEAN UP:

- Close container tightly after each use & keep upright
- Store in original container between 4°C & 32°C, locked up and in a well ventilated cool area & protect from sunlight
- Shelf life is approx 3 years in unopened container - less after opening. Storage beyond that time does not necessarily mean the product is not usable. Do a small test area first
- Do not re-use container. Discard in rubbish
- Clean tools & clothing with water before they dry.

FIRST AID:

Immediately Contact Poisons Centre (Australia Ph: 131-126, NZ Ph: 0800 764-766) or a doctor. Ingestion: Rinse mouth. Do NOT induce vomiting. Eyes: Rinse cautiously with water for several minutes. Remove contact lenses if present and easy to do. Continue rinsing. Clothes: Remove contaminated clothing and wash before use; Skin & Hair: Wash with plenty of soap and water. Inhalation: Remove victim to fresh air & keep at rest in a comfortable position for breathing; General: If any irritation persists get medical advice.

PRODUCT WARRANTY - SEALERS PLUS (A Division of Aqua-Seal STS™) "The Manufacturer" warrants to the original purchaser of its products that such products are free from manufacturing defect and does not warrant or guarantee the workmanship performed by any person or firm installing its products. The manufacturer's obligation under this warranty is limited solely to the original purchaser and solely shall be limited to the replacement of the product sold or refund. This warranty will not extend to any product which has been modified in any way or which has not been used in accordance with the printed instructions. The manufacturer makes no other warranties either expressed or implied. The end user must determine the suitability of the product for their intended use. **ALWAYS READ ENTIRE LABEL, SDS & TECHNICAL BULLETIN BEFORE USE & TEST FIRST.**



SEALERS PLUS (AN AQUA-SEAL BRAND)

P: +61 2 9521 4000 Mon - Fri 9.00am-4.00pm E: sales@sealersplus.com.au

AUS: www.sealersplus.com.au NZ: www.sealersplus.co.nz Global: www.sealersplus.com



© Copyright July 2022